

CONTENTS

Company Profile

- 01 Organization
- 02 Quality system

Products and Technology

- 03 LCD displaying, profession manufacturing, elaborate making, high-quality products LCM
Producing Ability
- 04 LCD production, technology, process, manufacture
- 05 LCM production, technology, process, manufacture
- 06 Back light manufacturing

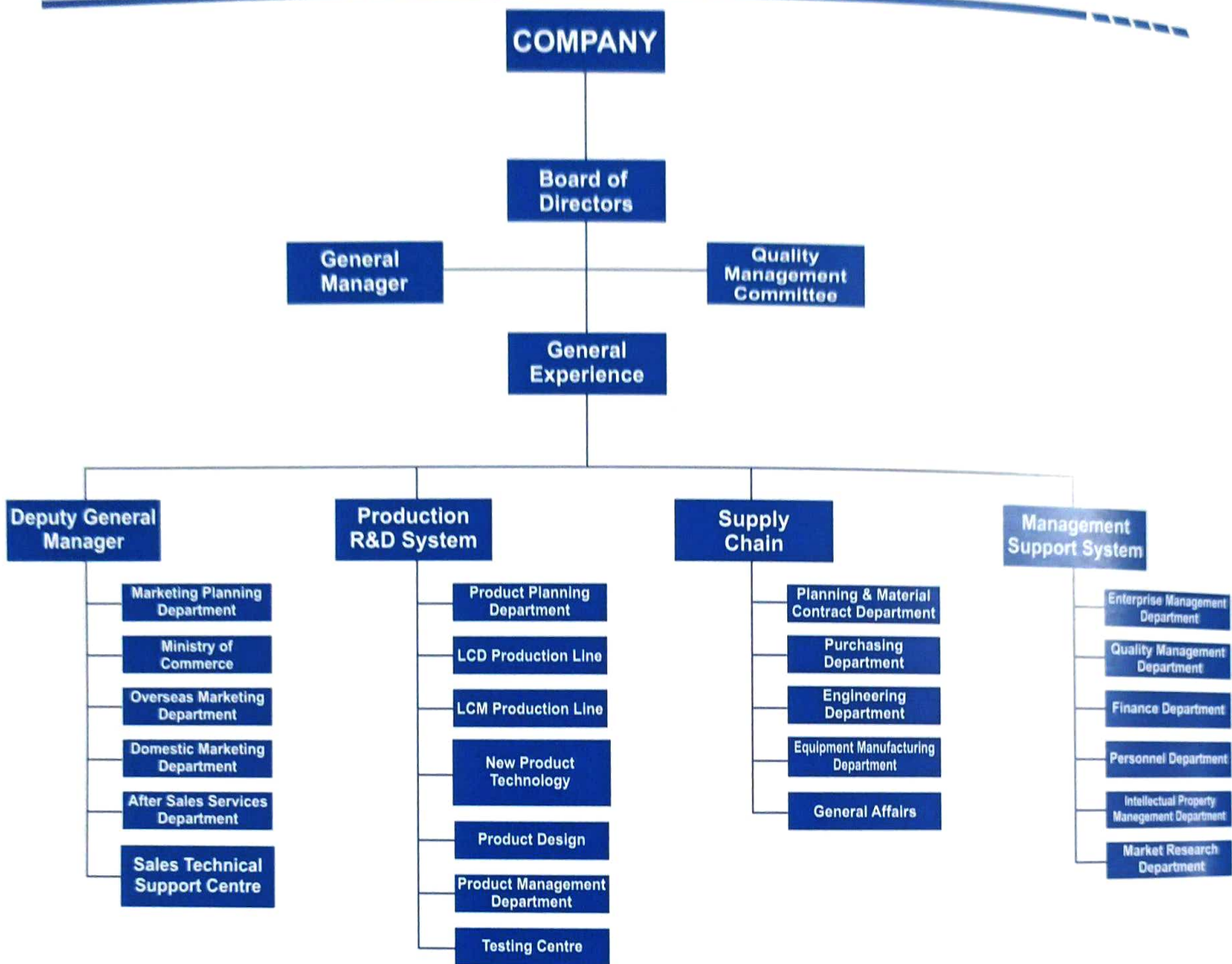
Product Typical Application

- 07 Fuel dispenser
Military equipment
Industrial instrumentation
- 08 Medical instrument
Auto display equipment
Communications equipment
- 09 Financial system
Electronic toy
Household electric appliances

Catalogue

- 10 COG LCD DISPLAY
- 11 COB Standard LCM
- 12 LCD for Fuel Dispenser

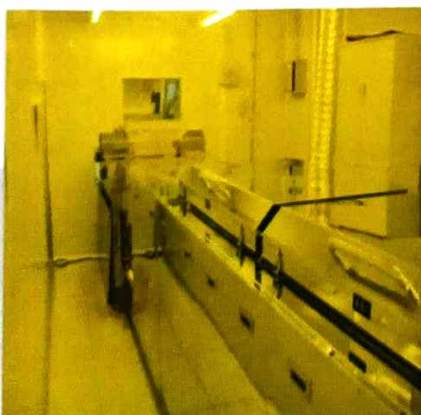
Organization schema



Quality system

We set up a complete quality assurance system, from checking of raw material, product designing, making of prototypes to mass production. All these are implemented strictly according to the QC system. We set up a standard system by relevant quality manual, Procedure documentation, Operation guide, Working instructions(including management, technology equipment, product), QC records these four documents based on the rule of ISO9001. We enforce strict inspection control toward in-coming raw material., 100% examine the main material and verify the quality o subsidiary material. We conduct high & low temperature storage test, vibatio test, etc.

LCD Production Workshop >>>



LCD displaying, profession manufacturing, elaborate making, high-quality products

Pursuing excellence in quality, Creating superior service; Market as a lever, technology as a vanguard and survive on quality

Our products are widely apply to automotive and aviation field, display meter, temperature and humidity recorder, electronic scale, mutimeter, digital ammeter, watermeter, bank counting machine, electronic safe deposit box, cash registers, stock mobile, telephone, interphone, mobile, massager, running meter, Fat teller, air-conditioner.



Producing Ability

LCD Production

ITO Glass Thickness	0.30, 0.40, 0.50, 0.55, 0.70, 1.10 and 2.00mm
Special Process	Pins, Zebra Paper, Multi Colours, Screen Printing Pad Printing Liquid Crystal Light Valve, Conductive Tape
Line Width	Minimum Point Spacing : 10um Minimum COM / SEG :10um
Operating Temp Range	TN : -40°C~ +90°C STN&LCD Module : - 30°C~ +85°C

LCM Production

Technology	Types of	COB, SMT, COG, COF, TAB, HeatSeal
	Pitch	Minimum30µmforTAB
		Minimum15µmforCOG
		Minimum200µmforHeat Seal

FSTN/CTN/VA

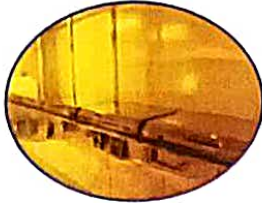
Types of	2015
COG	300K/M
COB	300K/M
TAB	100K/M

LCD production, technology, process, manufacture

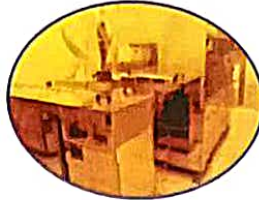
preceding process >>>



ITO / Clean



Photoresist Coating



Exposure



Developing



graphic detection



Etching



Clean



Polyimide Coating



Curing



Cleaning



Screen printing

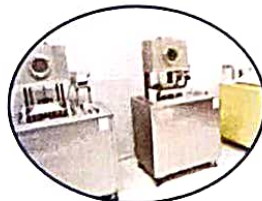


Spacer Spray

subsequent process >>>



Scribing



Liquid Crystal Injection



Levelling



Cleaning



Visual Inspection



End-Sealing



Electrical Insp.



Screen printing



Polaroids Pasted



Bit Pin



Code-spurting



Final Insp.&Packing

LCM

LCM production, technology, process, manufacture

Production shop

COB 320×240

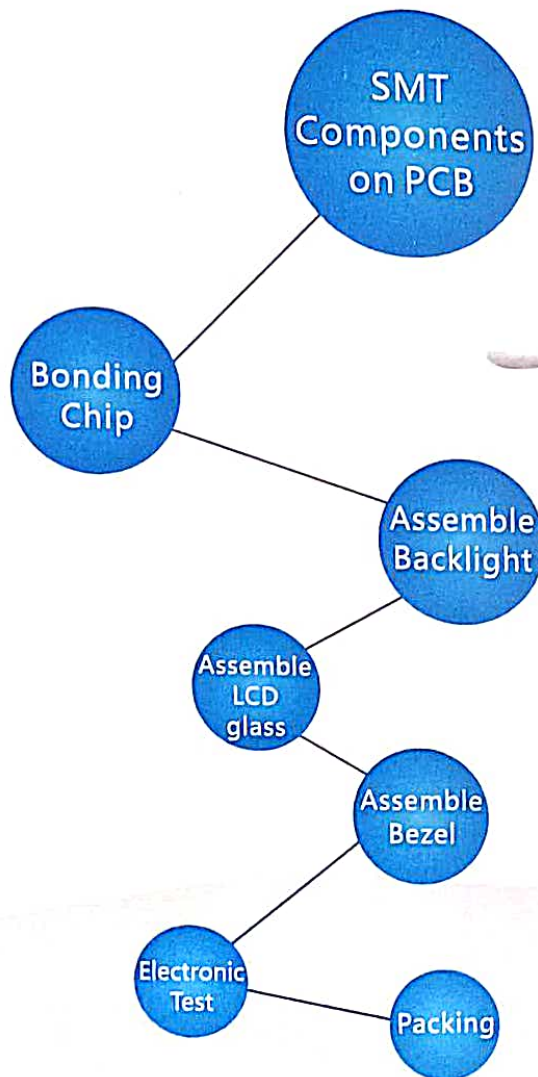
SMT PCB, FPC SMT

COG, VA, TN

COB production line products do more than 320×240

SMT production lines to do the PCB, FPC, SMT

Mainly in monochrome COG, color CTN



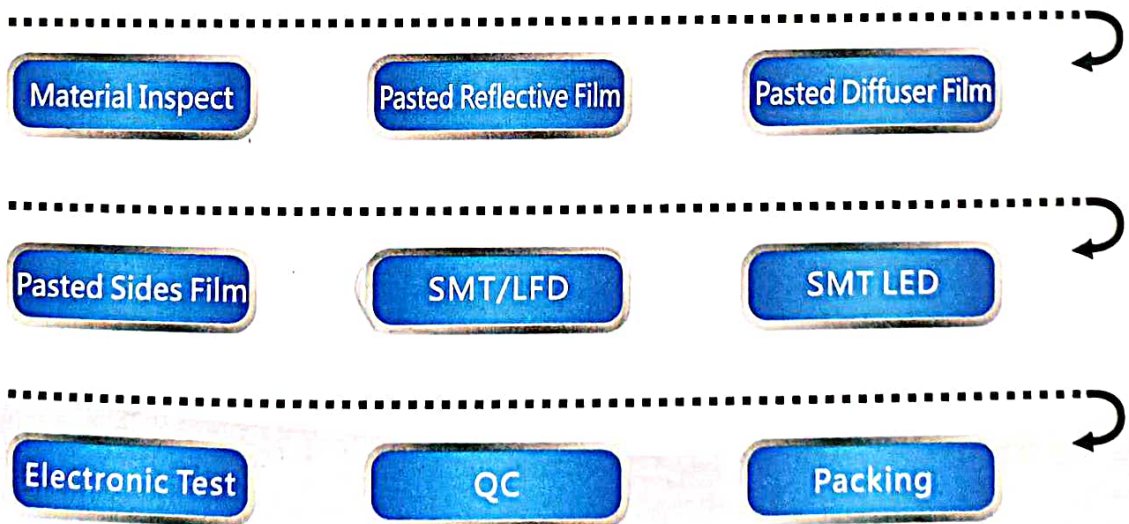
L
C
M



Back light manufacturing



Back light manufacturing



LCD

Typical application LCD products

Fuel dispenser



Military equipment



Industrial instrumentation



BENCHMARK

Medical instrument



Auto display equipment



Communications equipment



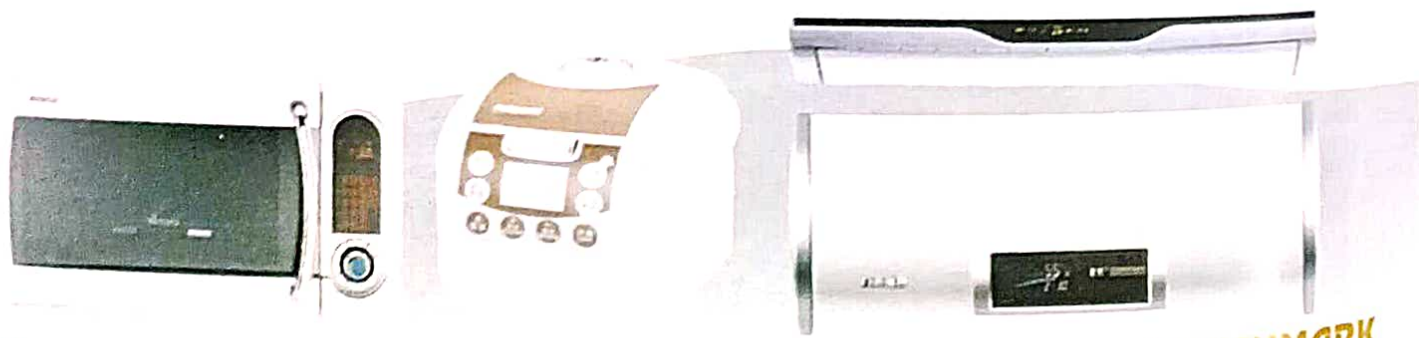
Financial system



Electronic toy



Household electric appliances



COG LCD DISPLAY

MODEL	OUTLINE(L*W*H)	DOT NUMBER	VIEW AREA(L*W)	DOT SIZE(L*W)mm	DOT PITCH(mm)	VOLTAGE	INTERFACE	
Ben12832G-508	50*19.2*3.6	128*32	43.2*12.0	0.29*0.3	0.315*0.325	3.3V	FPC	SERIAL
Ben12832G-509	51.7*19.2*1.75	128*32	43.2*12.0	0.29*0.3	0.315*0.325	3.3V	FPC	SERIAL
Ben12832A-3G	67.7*29.7*2.8	128*32	62.1*17.1	0.40*0.40	0.46*0.46	3.3V	FPC	SERIAL / PARALLEL
Ben12832G-037	67.7*29.7*2.8	128*32	62.1*17.1	0.40*0.40	0.46*0.46	3.3V	FPC	SERIAL / PARALLEL
Ben12864G-10181	25.5*19.75*1.7	128*64	23.5*14.0	0.14*0.14	0.16*0.16	3.3V	FPC	SERIAL
Ben12864G-181	27.2*21.45*3.1	128*64	23.5*14.0	0.14*0.14	0.16*0.16	3.3V	FPC	SERIAL
Ben12864G-10133	28.5*20*1.7	128*64	25.5*13.3	0.18*0.18	0.15*0.15	3.3V	FPC	SERIAL
Ben12864G-1013	28.5*20*1.7	128*64	25.5*13.3	0.18*0.18	0.15*0.15	3.3V	FPC	PARALLEL
Ben12864G-135	29.90*22.10*6.77	128*64?	25.5*13.3?	0.16*0.17	0.18*0.19	73.3V	FPC	PARALLEL
Ben12864G-1353	29.90*22.10*6.7	128*64?	25.5*13.3	0.16*0.17	0.18*0.19	73.3V	FPC	SERIAL
Ben12864G-1016	35.0*31.4*2.95	128*64	30.7*23	0.2*0.31	0.21*0.32	3.3V	FPC	SERIAL
Ben12864G-10162	35.0*31.4*2.95	128*64	30.7*23	0.2*0.31	0.21*0.32	3.3V	FPC	SERIAL
Ben12864G-10163	35.0*31.4*2.95	128*64	30.7*23	0.2*0.31	0.21*0.32	3.3V	FPC	SERIAL
Ben12864G-572	39.0*29.0*4.0	128*64	36.0*20.0	0.14*0.15	0.16*0.17	3.3V	FPC	SERIAL
Ben12864G-573	40.8*31.5*3.6	128*64	36.0*20.0	0.22*0.24	0.25*0.27	3.3V	FPC	SERIAL
Ben12864G-0088	43.5*33.8*3.5	128*64	39.8*25.5	0.26*0.33	0.29*0.36	3.3V	FPC	SERIAL
Ben12864G-091	43.5*33.8*3.5	128*64	39.8*25.5	0.26*0.33	0.29*0.36	3.3V	FPC	SERIAL
Ben12864G-1017	43.9*28.1*3.0	128*64	40.7*21.1	0.258*0.257	0.288*0.287	3.3V	FPC	PARALLEL
Ben12864G-095	43.5*33.8*3.5	128*64	39.8*25.5	0.03*0.33	0.29*0.36	3.3V	FPC	SERIAL / PARALLEL
Ben12864G-330	47.0*35.0*3.3	128*64	43.1*26.7	0.3*0.365	0.32*0.385	3.3V	FPC	SERIAL
Ben12864G-378	51.3*35.8*4.18	128*64	47.1*26.5	0.33*0.33	0.35*0.35	3.3V	FPC	SERIAL / PARALLEL
Ben12864G-331	55.0*39.5*4.3	128*64	45.2*27.0	0.30*0.36	0.32*0.38	3.3V	FPC	SERIAL / PARALLEL
Ben12864G-332	58.4*39.3*4.8	128*64	53.6*29.0	0.36*0.37	0.38*0.39	3.3V	FPC	SERIAL / PARALLEL
Ben12864G-33202	58.4*39.3*4.8	128*64	53.6*29.0	0.36*0.37	0.38*0.39	3.3V	FPC	SERIAL / PARALLEL
Ben12864G-139	60.0*45.0*5.0	128*64	54.2*32.5	0.34*0.38	0.375*0.415	3.3V	FPC	SERIAL / PARALLEL
Ben12864G-13903	60.0*45.0*5.0	128*64	54.2*32.5	0.34*0.38	0.375*0.415	3.3V	FPC	SERIAL / PARALLEL
Ben12864G-102	71.3*48.2*5.2	128*64	65.5*38	0.445*0.485	0.475*0.515	3.3V	FPC	SERIAL / PARALLEL
Ben12864G-1503	71.3*48.2*5.2	128*64	65.5*38	0.445*0.485	0.475*0.515	3.3V	FPC	SERIAL / PARALLEL
Ben12864G-1504	71.3*48.2*5.2	128*64	65.5*38	0.445*0.485	0.475*0.515	3.3V	FPC	SERIAL / PARALLEL
Ben12864G-202	71.3*48.2*5.3	128*64	65.5*38	0.445*0.485	0.475*0.515	3.3V	FPC	SERIAL / PARALLEL
Ben12864G-100	71.3*52.2*5.3	128*64	65.5*38	0.445*0.485	0.475*0.515	3.3V	FPC	SERIAL / PARALLEL
Ben12864G-200	71.3*48.2*5.3	128*64	65.5*38	0.445*0.485	0.475*0.515	3.3V	FPC	I2C
Ben12864G-302	79.4*53.8*5.0	128*64	73.6*40.2	0.490*0.489	0.520*0.519	3.3V	FPC	SERIAL / PARALLEL
Ben12864G-301	79.4*53.8*5.0	128*64	73.6*40.2	0.490*0.489	0.520*0.519	3.3V	FPC	SERIAL / PARALLEL
Ben12864G-042	77.4*52.4	128*64	70.0*40.0	0.520*0.480	0.520*0.480	3.3V	PIN	SERIAL / PARALLEL
Ben128128G-81202	48.5*57.1*4.0	128*128	43.5*45.15	0.327*0.233	0.352*0.258	3.3V	FPC	I2C/SERIAL/PARALLEL
Ben128128G-338	57.3*50.3*4.2	128*128	49.0*37.0	0.33*0.23	0.36*0.26	3.3V	FPC	I2C/SERIAL/PARALLEL
Ben19264G-333	56.2*23.24*2.0	192*64	47.5*21.54	0.218*0.218	0.238*0.238	3.3V	FPC	SERIAL
Ben19264G-329	90.2*43.15*5.0	192*64	84.5*31.5	0.360*0.380	0.410*0.410	3.3V	FPC	SERIAL / PARALLEL

LCD for Fuel Dispenser

Model No	Digit Quantity	LCD Dimension	Metal Pin	Pin Length	Temperature	PICTURE
4508	4 DIGIT	50.8X30.48(22.86)	40PCS	Bend PIN 6.3MM	-30 to85C	
81612	5 DIGIT	114.5X45(38)mm	64PCS	Bend PIN 15MM	-30 to85C	
25716	5 DIGIT	78X50.8(46.8)mm	38PCS	Straight PIN 10mm	-30 to85C	
25980	5 DIGIT	86X35(30)mm	38PCS	Straight PIN 7mm	-30 to85C	
4500	5 DIGIT	50.8X30.4(22.8)mm	40PCS	Bend PIN 6.3MM	-30 to85C	
24452	6DIGIT	137.16X46.38(38.3)mm	70PCS	Bend PIN 6.3MM,10MM,15MM	-30 to85C	
4300	6DIGIT	93.85X38.1(30.48)mm	50PCS	Bend PIN 6.3MM	-30 to85C	
4576	6DIGIT	137.16X46.38(38.3)mm	70PCS	Bend PIN 6.3MM	-30 to85C	
25979	6DIGIT	172X66(60)mm	54PCS	Straight PIN 7mm	-30 to85C	
4614	6DIGIT	172X66(60)mm	70PCS	Bend PIN 7MM	-30 to85C	
26338	7DIGIT	172X66(60)mm	54PCS	Straight PIN 7MM	-30 to85C	
81613	7DIGIT	172X65.8(60)mm	70PCS	Bend PIN 15MM	-30 to85C	
4571	8DIGIT	60X22(20)mm	20PCS	Straight PIN 10MM	-30 to85C	
25715	8DIGIT	198X86(81)mm	60PCS	Straight PIN 10MM	-30 to85C	
4240	775DIGIT	225X164(159)mm	150PCS	Straight PIN 15MM	-30 to85C	
4334	775DIGIT	173.7X132.2(128.2)mm	154PCS	Straight PIN 10MM	-30 to85C	
25966	775DIGIT	173.7X132.2(128.2)mm	154PCS	Bend PIN 15MM	-30 to85C	
4555	775DIGIT	146X146(140)mm	144PCS	Straight PIN 7MM	-30 to85C	
4617	765DIGIT	115X95(90)mm	132PCS	Straight PIN 7MM	-30 to85C	
4238	776DIGIT	174X131(126)mm	162PCS	Straight PIN 12.5MM	-30 to85C	
4572	776DIGIT	208.28X162.56(156.56)mm	162PCS	Straight PIN 15MM	-30 to85C	
4657	776DIGIT	184X167(162)mm	162PCS	Straight PIN 10MM	-30 to85C	
81711	886DIGIT	174X132.5(127.5)mm	168PCS	Straight PIN 8MM	-30 to85C	
81902	886DIGIT	228.6X172(167)mm	168PCS	Straight PIN 8MM	-30 to85C	